

UNIVERSAL BRACKETING SYSTEM

» 570 & 572 SERIES

PipeTitan™

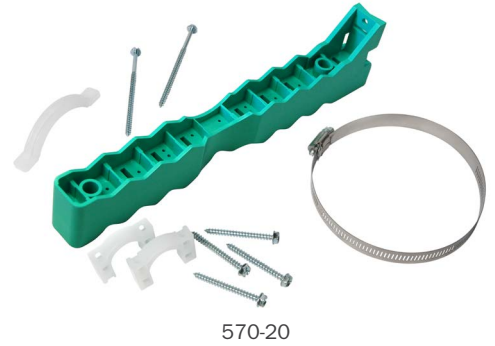
ITEM # SUBMITTED	_____
JOB NAME	_____
LOCATION	_____
ENGINEER	_____
CONTRACTOR	_____
PO#	_____ TAG _____

SPECIFICATION

Sioux Chief 570 series Pipe Titan™ shall be used where necessary for bracketing applications. Bracket shall allow fastening on top or bottom edge. Molded pipe cradles shall be 1" on-center for quick and easy pipe alignment. Bracket shall have pilot holes for screws and slots for stainless steel bands. Bracket shall have holes on each end for 3/8" thread rod for trapeze applications. Bracket shall prevent electrolysis and reduce noise caused by thermal expansion and contraction. Bracket and clamps shall be CPVC compatible. Bracket shall fit within a 2 x 4 wall when fastened to 2" DWV pipe. Bracket shall be IAPMO listed.

MATERIALS

- Red Bracket:** flame-retardant ABS (UL-94 V0 flame rating), U.V. stabilized
- Green Bracket:** ABS, U.V. stabilized
- Red Straps/Clamps:** flame-retardant ABS (UL-94 V0 flame rating), U.V. stabilized
- White Straps/Clamps:** high-density polyethylene, U.V. stabilized
- Clamp Screw:** zinc-plated steel, 5/16" hex/Phillips
- Steel Band:** 300 stainless steel
- Band Screw:** 410 stainless steel, slotted/hex-head



SAFE WORKING LOAD*

Mounting point	1	2	3	4	5	6	7	8	9
One end:	275	155	90	72	62	50	47	42	40 lbs.

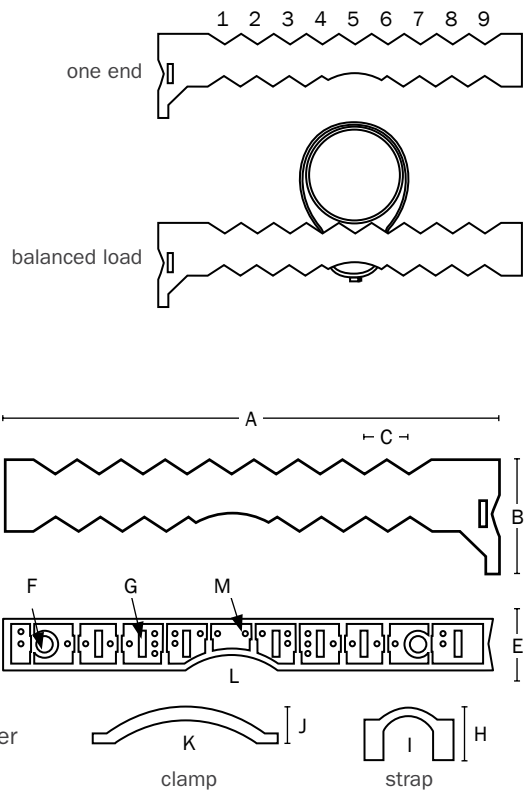
Balanced load: 190 lbs. max

Stainless steel band: 60 in/lbs. ultimate torque

*One-half failure load at 72°F.

DIMENSIONS

- A:** Overall length 11"
- B:** Base height 2 1/2"
- C:** Cradle centers 1" on center
- D:** Bracket width 1 1/4"
- E:** Base width 1 5/8"
- F:** End holes 13/32"
- G:** Stainless steel band slots 9/16"
- H:** Strap height 1 1/4"
- I:** Strap capacity 5/8"-1" O.D.
- J:** Clamp height 7/8"
- K:** Clamp capacity 7/8"-3 1/2" O.D.
- L:** Waste arm radius 1 3/4"
- M:** Pilot holes for clamp screws
- N:** Stainless steel band 1/2" wide x 0.025" thick, 5" or 7" max diameter



Made in USA

Create Item Number

57A-B

e.g. **572-20:** Red bracket with two straps, one clamp and one 5" stainless steel band.

BRACKET A

- 0** = green
- 2** = red (flame-retardant)

BRACKET CONFIGURATION B

- 10** = two straps, one clamp*
- 20** = two straps, one clamp, one 5" stainless steel band
- 22** = two straps, one clamp, one 5" stainless steel snap-lock band
- 24** = two straps, one clamp, one 7" stainless steel snap-lock band